



Far North
District Council



MINISTRY OF BUSINESS,
INNOVATION & EMPLOYMENT
HIKINA WHAKATUTUKI

FAR NORTH BOAT-RAMP STUDY

TIF-R4-002 FNDC

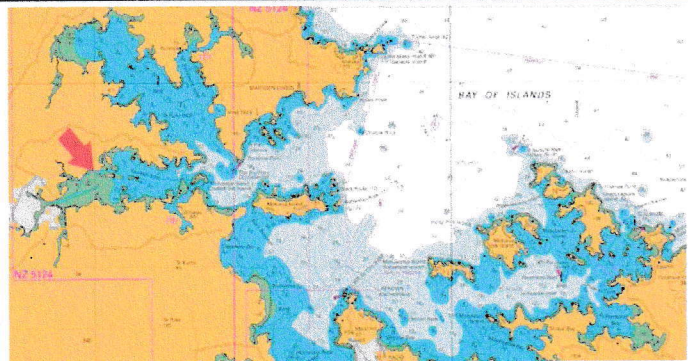
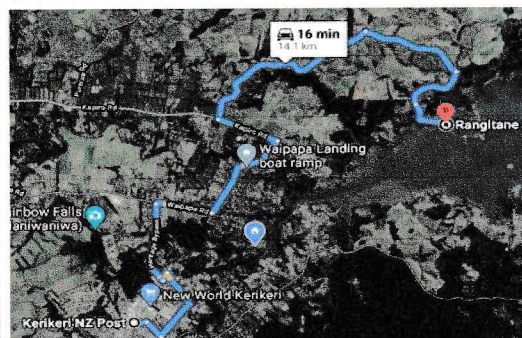


NorthernEdge

Rangitane Public Boat Ramp

Rangitane is on the Kerikeri Inlet approximately 14km driving from Kerikeri. It is in a relatively close grouping with ramps at Waipapa Landing, Doves Bay and Opito Bay.

- Ramp is an FNDC asset
- Jetty was a community initiative and opened in 1992
- Also services boat moorings along the Inlet channel
- FNDC have proposed a major redevelopment (image lower right), timelines are yet to be confirmed as significant consultation and approvals are needed
- Rangitane Recreation Association is actively involved in supporting the FNDC development proposal



Stakeholders

Far North District Council
Bay of Islands-Whangaroa Community Board
Far North Holdings
Northland Regional Council
IWI Contacts pending - (Maori Liaison Officer)
Affected residential properties (GIS to confirm)
Affected mooring owners
Rangitane Recreation Association

Rangitane – Car Park Current State

- No designated trailer parking
- Room for around 8 trailers depending on sizes
- Parking is along both sides of the roadway which reduces the road to one lane
- Private driveway may be blocked/restricted at times
- Road is blocked to passing traffic when boat trailers are maneuvering on and off the ramp
- There is no footpath for pedestrians on their way to and from the Reserve and they have to negotiate cars, trailers and traffic

Dedicated Trailer Parks	0
Marked Parking Bays	No
Surface	Seal
Surface Condition	Good
Proximity to Residences	Close
Lighting	None
Security	Poor

Turn-off to Carpark	N/A
Turn-off Safety	Poor
Maneuvering Room	Poor

Estimated Safe Mixed-Size
Parking Capacity

8

Other Facilities



Trailer Maneuvering
Hazardous to Traffic



Roadside Parking Only



No Dedicated Trailer Parking



Rangitane – Boat Ramp Current State

- Good for most tidal conditions
- Narrow for larger boats
- In good to average visible condition
- Manoeuvring trailer will block road
- Docking is potentially dangerous
- Coming onto ramp is potentially dangerous

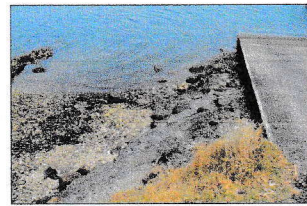
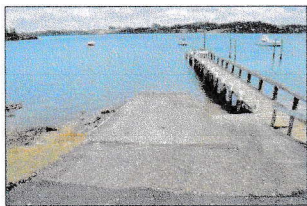
Ramp Surface	Concrete
Surface Condition	Good
Docking	Poor
Safe Docking Capacity	0
Beaching Material	Rock
Beaching Safety	Poor



Vehicle Capability	Any
Depth	All Tide
Boat Size	All
Trailer Maneuvering	Poor
Lighting	None
Access to Open Water	250m



Ramp Capacity



Jetty is not safe for docking



Ramp surrounds are not good for beaching



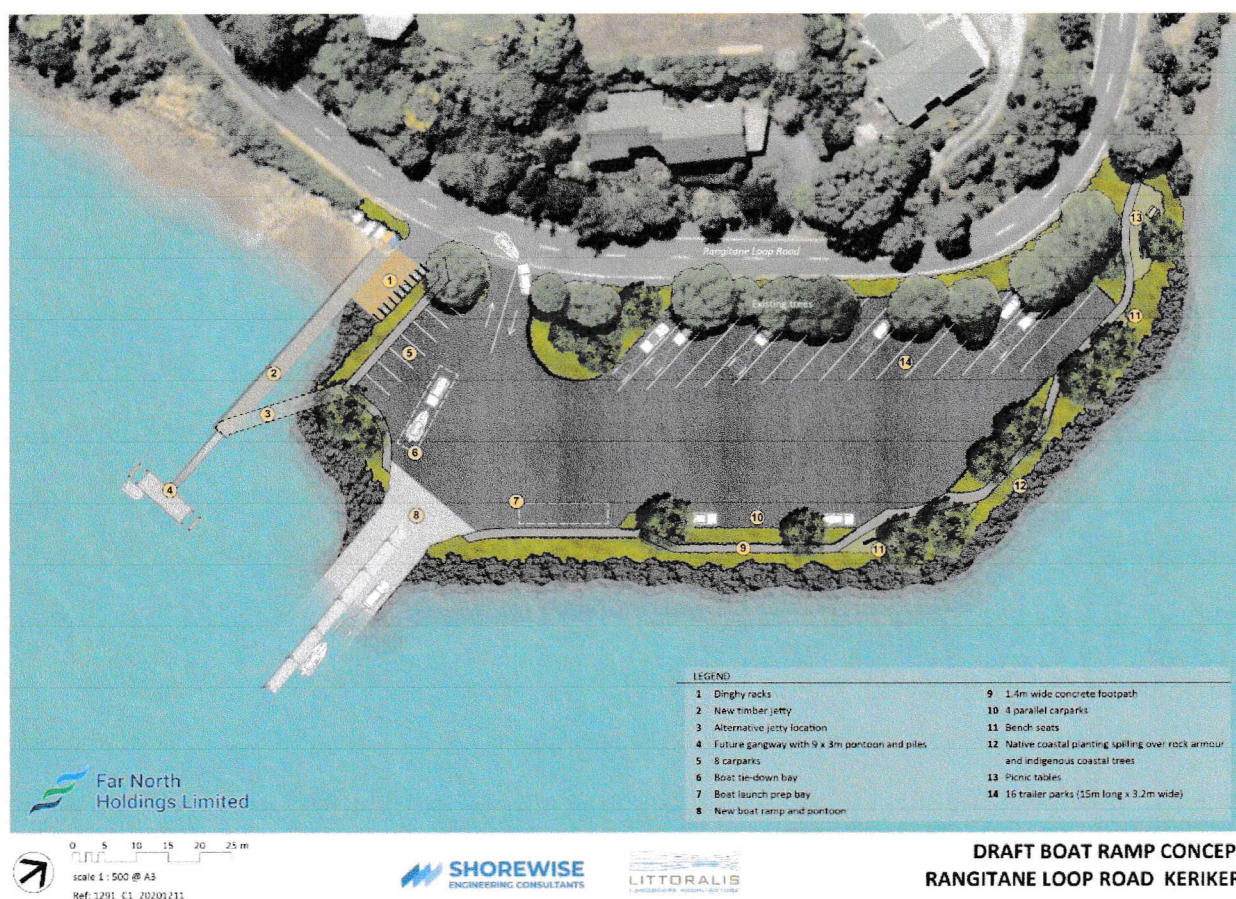
Not suitable for unassisted launching or retrieval



Increase the Physical Footprint

- Land Reclamation

Rangitane is a suitable site, as defined in policy 10 of the New Zealand Coastal Policy Statement 2010, for a land reclamation project which would provide additional safe car-parking, an enhanced waterfront area and enable the ramp to be replaced with a safer and more efficient ramp. Far North Holdings is currently working through the process on the basis of the initial concept below and funding has been approved with support from the Provincial growth fund.



- Rangitane Land Reclamation Concept Drawing

The location of the ramp directly off Rangitane loop road limits options for improving car-parking efficiency.

- Rangitane Loop Road made one-way.

Both the boat-ramp and Rangitane Reserve are accessed from Rangitane Loop Road. The Ramp is approximately 140m from the current Reserve entrance. In the 240m section from the top of the rise 100m west of the Ramp to the Reserve entrance there are only three private driveways.

This section of the road could be designated one-way with the left-hand side of the road utilised as the through road.

Making this section of Rangitane Loop Road one-way provides the following benefits:

- Manoeuvring at the Ramp no longer blocks the seaward road lane.
- Overall safety of vehicle movements is improved.
- Space is created for vehicles to park by the Ramp while securing boats to trailers.
- Space is created for a walkway from the Ramp to the Reserve.
- Pedestrian safety is improved.
- The limited parking on the right-hand side of the road remains.

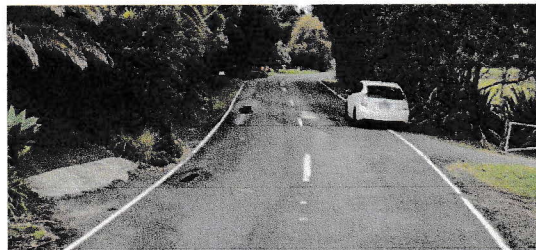
The three private driveways while largely unaffected may require some additional works to better facilitate a left hand turn on exiting.



Rangitane Loop Road as a one-way system



Driveways near Ramp on Rangitane Loop Road



Driveway near Reserve on Rangitane Loop Road

Peak Demand Temporary Capacity

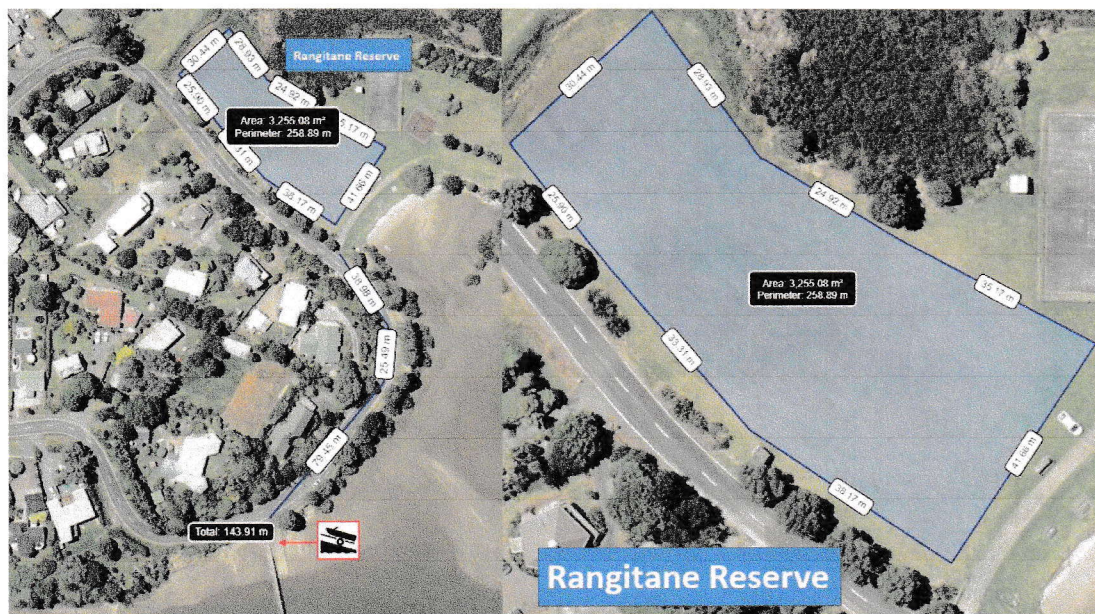
- Rangitane Reserve

With the exception of land reclamation, the only public land in the Rangitane Ramp operational area is the Rangitane Reserve which is approximately 140 meters further north along Rangitane Loop Road. The reserve has a significant flat grass area of over 3,000 square meters with vehicle access. The reserve land was developed informally, and the legal status needs to be clarified.

There is a small playground and a tennis court on the reserve and the addition of toilet facilities is currently under consideration. The reserve area is well used as a recreational area and any carparking area would be temporary over peak season.

The reserve space can comfortably accommodate 20 Trailer Parks on the back section of the vacant land, leaving the beachside picnic area as it is.

A walkway from the Ramp to the Reserve will be needed to improve pedestrian safety and changes to traffic on Rangitane Loop Road would further enhance this option.



Rangitane Ramp and Reserve measured area.



Rangitane Reserve



Rangitane Reserve superimposed car-park areas for representation of available space

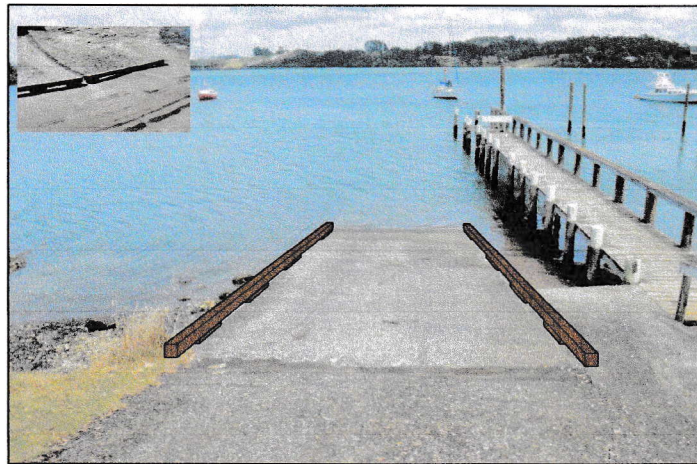
Options to improve Rangitane boat-ramp

If the proposed reclamation project proceeds, then the following ramp recommendations are no longer valid.

Improve Ramp Safety and Efficiency

The drop off either side of Rangitane boat-ramp is of such height to cause significant damage and potential injury should a driver make a misjudgement while backing into position.

- Ramp Guides both sides of the ramp



The Rangitane Wharf structure is not safe for docking boats and boats approaching the ramp have to come aground on the concrete ramp.

- Floating Jetty

